

Kingsbury News



WB 31ST
MARCH



All
Happy
Easter

Easter Celebrations

Thank you to all the families who participated in our Easter activities and worked so hard to make beautiful creations.

Mother's Day Celebration

Thanks to everyone who joined our Mother's Day celebrations! It was wonderful to see so many of you there, making the day extra special for all involved.

Grand Opening: Lumiere SEN

Our signing choir received a special invitation to perform at the opening of the new Lumiere SEN play centre in Fazakerley. The children arrived to a warm welcome from the Lord Mayor of Liverpool before brilliantly performing three songs: "It Must Be Love," "Cotton Eyed Joe," and "Unstoppable!" The attendees were blown away by their amazing signing and singing. Afterwards, the children got to be some of the first to test out the new play equipment, which received a five-star review—they didn't want to leave!

Parent and Carers Coffee Morning

A huge thank you to those families who attended the parents and carers get-together. It was lovely for our parents to meet each other and share ideas. Keep an eye out for the next event.

Wellbeing Award

Our school is currently in the process of re-accrediting for our Wellbeing Award. To help us better understand and support our children's wellbeing, we kindly ask you to check your email and complete the survey by 23rd April.

Sign of the Week: Next week's signs are 'Jesus' and 'basket'. You can find these signs at: Parents/carers/Makaton/sign of the week.

PTFA Parent Hacks

For families with children who experience sensory avoidance to fabric or clothes tags, have you explored the ASDA Easy Wear clothing range? They are soft, stretchy, and completely tag-free. Additionally, they feature Velcro instead of buttons, promoting independence for the children.

Weekly Wish List

Classes would welcome any donations of bubble mixture or washing-up liquid. Thank you!

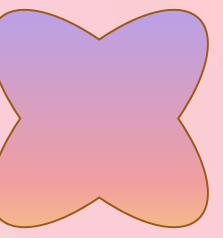
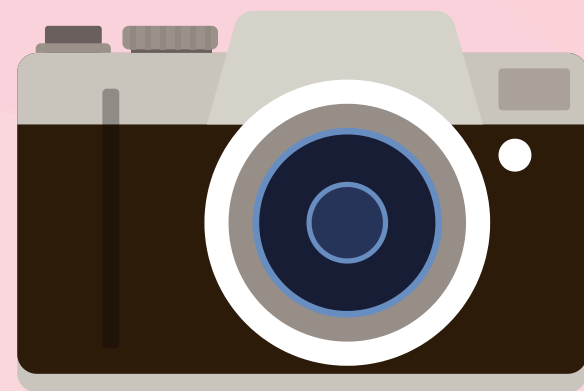
Have a lovely Easter Break

Helen Smith

IMPORTANT DIARY DATES: Summer Term's dates will be on the next newsletter



This week in Pictures



Look at our fantastic Easter bonnet winners!

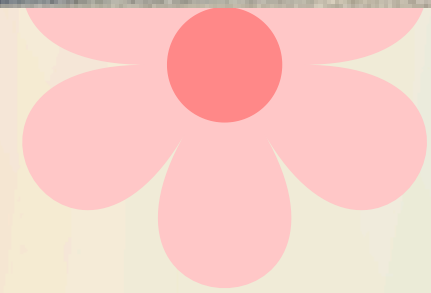


Well done everyone! 🐰



PIC-COLLAGE

Grand Opening @ Lumiere SEN



This Week in Notices

BIRCHWOOD
a different way

FREE CAFE AND COMMUNITY SHOP

Tanhouse Community Centre WN8 6AN Free Tea and Coffee and Shop Tuesday 10am-12pm	Eccumenical Centre WN8 6LU Free Shop and Cafe Thursdays 10am-1pm
Free Shop and Cafe: Wednesdays- 10am-1pm	Free Shop Friday 10am-12pm

Enjoy a Free Meal and a Community Shop.
A great way to make new friends and have friends
company

More information Contact 01695713248

EASTER FAMILY HAF Disco Party

Come and join the party! After lunch there is Taz Entertainments bringing their show of comedy, magic, music & games. Get your face painted too! Then it's time to get creative with some art and craft activities. For children aged 4-11, younger siblings can attend. Children must be accompanied by their parent or carer.
Book via: <https://app.holidayactivities.com/login?=&signup=false>

Thursday 17th April (12-4pm)
The Hub @ Banks
Greaves Hall Avenue
Banks
PR9 8BL

EASTER FAMILY HAF Disco Party

Come and join the party! After lunch there is a disco party, face painting and a special Easter guest! Then it's time to get creative with some art and craft activities. For children aged 4-11, younger siblings can attend. Children must be accompanied by their parent or carer.
Book via: <https://app.holidayactivities.com/login?email=&signup=false>

Thursday 10th April (12-4pm)
The Hub @ Banks
Greaves Hall Avenue
Banks
PR9 8BL

ONE STOP SHOP

A monthly drop in where families can access support on:

- Housing
- Finance
- Emotional Health and Wellbeing

Access to service for:

- Employment advice
- Relationship advice
- Home safety

Find out about:

- Mental health support
- Accessing Food Banks
- Household living support

First Thursday of the month, 9am 'til 12 noon

The Skelmersdale Family Hub and Zone
Yeadon
Skelmersdale
WN8 6NL

PLAYGROUP

Come along to our weekly playgroup for lots of fun, play, singing, crafts and make new friends.

Venue: Brookfield Park Primary School
Location: Main Hall
Date: Every Tuesday (*term time only*)
Time: 09:15 – 11:15
Cost: £2.00 per session (*Includes tea, coffee, juice and toast*)

Everyone welcome!

Embracing Thrive: a parent and carers guide

The Thrive Approach®
For over 25 years, Thrive has been working with schools, settings and organisations to support the mental health and wellbeing of children and young people. Thrive equips educators with training, resources and an award-winning online tool, so they can better understand children and young people's needs and provide targeted, effective support. With its focus on building secure relationships and providing positive experiences, Thrive helps young people to feel safe, supported and ready to learn.

Building positive relationships
The connections children and young people have with the adults around them are key to their social and emotional development. Thrive activities focus on providing positive experiences and building trusting relationships. This helps young people to:

- Feel good about themselves and know that they matter
- Feel safe and secure in school
- Improve their emotional wellbeing
- Improve their capacity to be creative and curious
- Build their self-esteem and confidence to learn
- Recognise and manage their feelings
- Think before behaving in a certain way...and much more!

thrive
Removing barriers to learning

How does it work?
Thrive equips educators with strategies and activities to help build young people's social and emotional skills, as well as develop their ability to manage stress and take on life's ups and downs. The Approach is underpinned by neuroscience, attachment theory and child development research and is suitable for children and young people aged 0-25 years.

What difference does Thrive make?
Schools that have adopted the Thrive Approach have reported many benefits. These include calmer classrooms with fewer disruptions, improved attendance, reduced exclusions and higher achievements. To hear first-hand from settings already using Thrive, visit mythrive.uk/case_studies.

How will my child be involved in Thrive?
Your child will be profiled using Thrive-Online, an award-winning tool used to measure and monitor social and emotional development. Thrive-Online has behaviour and skills surveys that help staff to see where young people are in their development and identify any pupils who could benefit from additional support. Thrive-Online profiling will be led by school practitioners who will:

- Assess classes, groups and individuals to see where they are in their social and emotional development
- Create targeted action plans to help pupils to manage their behaviour, build emotional resilience and become more open to learning
- Measure and report on progress over time

Find out more
There is lots more information on the Thrive website: thriveapproach.com.

"Thrive has helped my son tremendously. It has given him more confidence and also it has helped him to calm down in difficult situations. I can see a huge difference in him. He looks forward to his Thrive time."
Parent

thrive
Removing barriers to learning

