

WEEKLY NEWSLETTER 29TH NOVEMBER



It's been an incredibly busy and cold week with our children engaging in a range of exciting activities. Winter has most definitely arrived - please remember to wrap your children up warm.

Active Advent: We have signed up for Active Advent. It is jam-packed with awesome physical activities for primary school children; it's fun, educational, and active! If you want to sign up and get access to free daily physical activities over Christmas at home, check the link: <https://imoves.com/active-advent-2024> or type in Imoves Active Advent on your preferred search engine. We all know that being active is good for us in so many ways. Not everyone meets the recommended level of participation in moderate-to-vigorous physical activity. The Christmas period is a time with additional holiday days, social occasions, overconsumption of festive foods, and is also accompanied by a decrease in physical activity and an increase in more sedentary behaviours such as sitting and screen time. So we are encouraging everyone to get active.

SEND Inspection for Lancashire Local Area Partnership: The inspectors want to know about the help and support that children and young people with SEND receive. Here is the link to have your say:
<https://ofsted.smartsurvey.co.uk/p/AreaSend/10327156>

Christmas Performance: Our Christmas performance is fast approaching - mark your calendars for Thursday, 5th December! Tickets are priced at £1 each and can be purchased through the school money app. Additionally, at Kingsbury Cottage, we will be hosting a Christmas-themed Stay and Play event instead of a performance. The date for this is Monday, 16th December, 2-3pm.

Sign of the Week: This week's signs of the week are mobile phone & iPad/tablet. You can find these signs at: Parents/carers/makaton/sign of the week. We have also added more Christmas songs to our website: Parents/carers/makaton/songs.

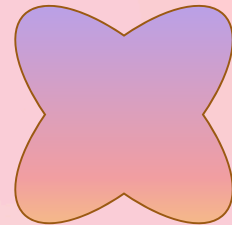
DON'T FORGET

Photographer: the photographer was in school this week, you should have received your online order form. Please place your orders as soon as possible to ensure you receive your photographs before the end of term.

Have a lovely weekend,

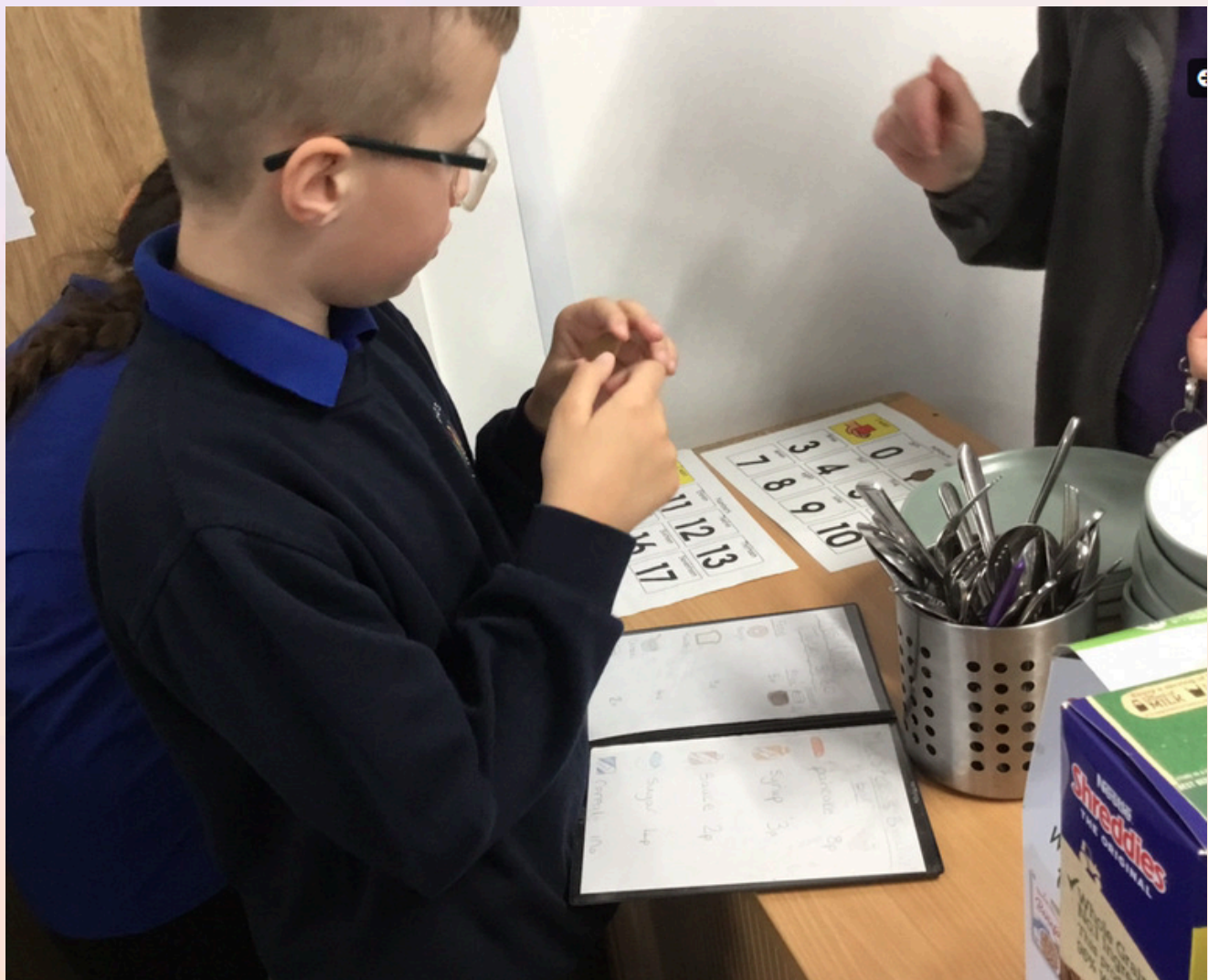
Helen Smith (Acting Head Teacher)

This week in Pictures



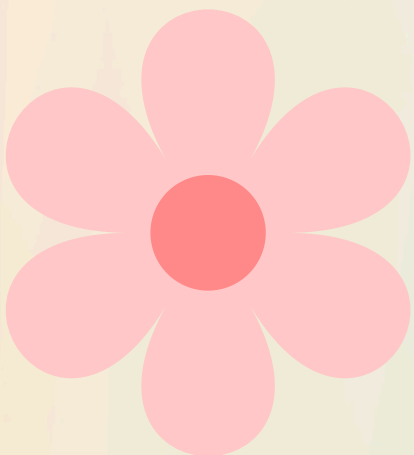
Maths

Art

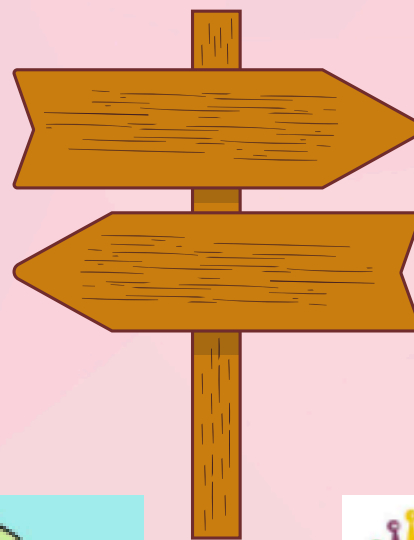


Tuckshop

Thrive Activities



Notices



EVENTS **2024**

15 NOV CHILDREN IN NEED
Dress like a rockstar

ART EXHIBITION @ ST PAUL'S CHURCH
From 1.30pm **FRI 15 NOV**

THURS 5 DEC A CHRISTMAS RECIPE
A Christmas celebration at 10am for Red, blue, indigo, orange, yellow, teal classes.

A CHRISTMAS RECIPE
A Christmas celebration at 2pm for Green, silver, lilac, gold, violet classes **THURS 5 DEC**

MON 16 DEC SANTA VISIT
At Kingsbury Cottage

CHRISTMAS PARTIES
At Kingsbury School **MON 16 DEC**

TUES 17 DEC SANTA VISIT

CHRISTMAS EVENTS @ KINGSBURY MAIN SITE

Thursday 5th December
A Christmas Recipe - Christmas performance
10am Red, blue, indigo, orange, yellow, teal classes
2pm Green, silver, lilac, gold, violet classes

Tuesday 10th December
Christmas Dinner

Monday 16th December
Class Christmas parties
Children are invited to come to school in their party clothes if they wish to.

Tuesday 17th December
Father Christmas visit
Framed photo of your child and Santa for £3.50 or A framed photo and keyring for £5

Friday 20th December
1.30pm Break-up for Christmas holidays

**Skelmersdale & District Foodbank**
Together with Trussell Trust

MEET AND GREET Santa
@ Kingsbury Main Site

SANTA IS VISITING KINGSBURY MAIN SITE DURING THE DAY ON TUESDAY 17TH DECEMBER
YOUR CHILD WILL GET TO MEET SANTA. TO CELEBRATE THE EVENT YOU HAVE THE CHANCE TO BUY A FRAMED PHOTO OF YOUR CHILD AND SANTA FOR £3.50 OR A FRAMED PHOTO AND KEYRING FOR £5
PAYABLE THROUGH THE SCHOOL MONEY APP BEFORE THE EVENT

How to get help

If you need help from our food bank there are a few simple steps to follow.

The most important step is to get a food bank voucher.

In order to provide the most appropriate help for the circumstances of your situation we work with local agencies. If they feel you are struggling to put food on the table, they will issue you with a food bank voucher/voucher code. The local agency can also provide long term support if needed to help address some of the issues behind the reasons for your crisis.

Agencies we work with include:

Citizens Advice: 03442 451294 [Foodbanks — Citizens Advice Lancashire West](#)

West Lancashire Borough Council: 01695 577177 [Food banks - West Lancashire Borough Council \(westlancs.gov.uk\)](#)

West Lancashire ARK: [West Lancs ARK - ARK](#)

- Jan 07826 656387

• Barry

The One Stop Shop is a monthly drop in where families can access support from different services under one roof.

We offer a warm welcome, refreshments and an opportunity to get help with:

Housing

Finance

Employment advice

Relationship advice

Home safety

Mental health support

Accessing food banks

Household living support

Access to learning

Emotional Health and Wellbeing

Childrens Health advice

Early years support

Local services



Drop in on the first Thursday of the month, between 9am 'til 12 noon at:

**The Skelmersdale Family Hub and Zone
Yeadon
Skelmersdale
WN8 6NL**

Between the Concourse and the Library

Tel: 01695 651350



Lancashire
County Council



**SKELMERSDALE
FAMILY
HUB
AND THE ZONE
WEST LANCASHIRE**



lancashire.gov.uk



Lancashire
County Council

